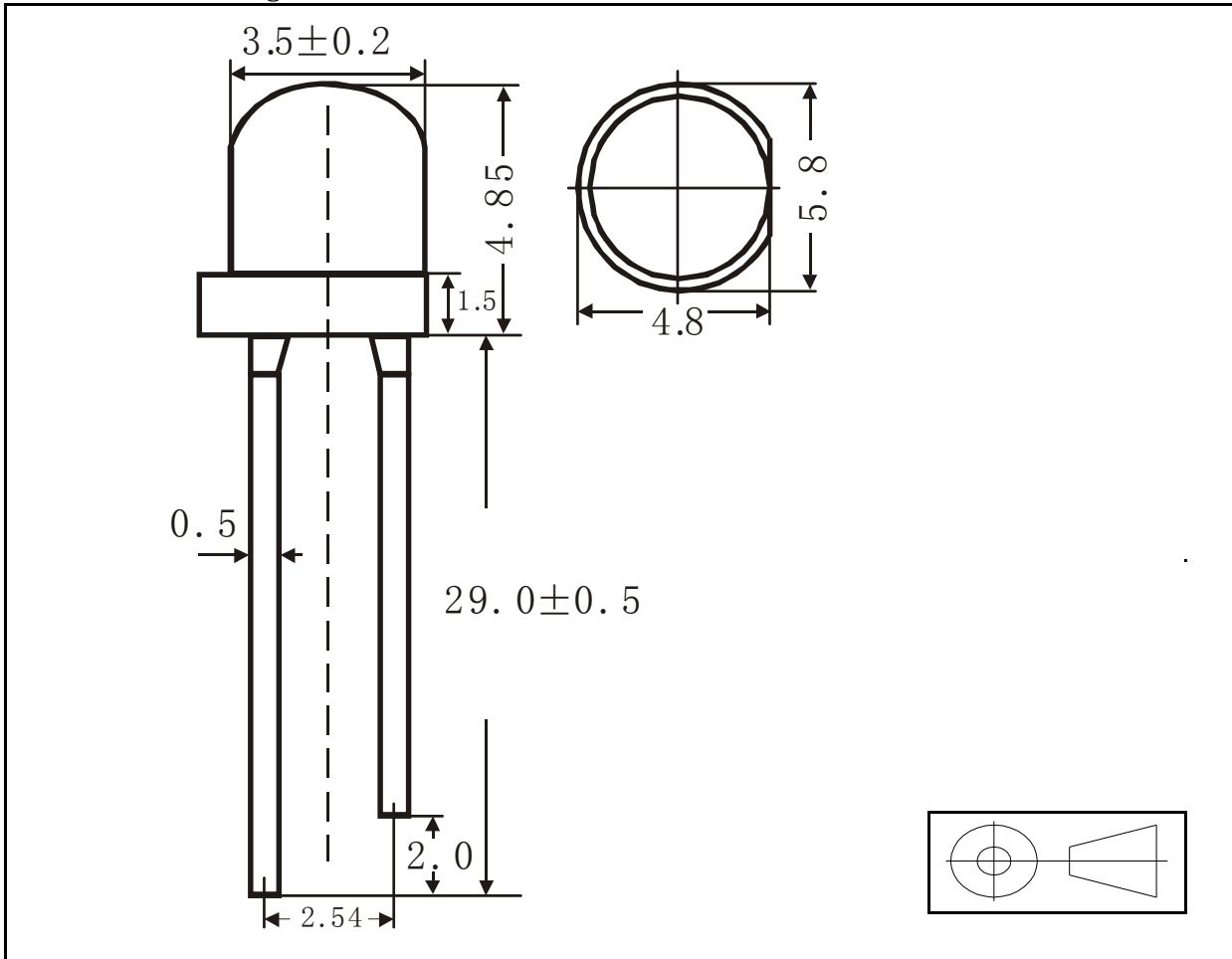




## MODEL:5MM草帽白

| 1.SPECIFICATIONS  |         |                         |      |     |      |      |
|---|---------|-------------------------|------|-----|------|------|
| (1) Absolute Maximum Rating <span style="float: right;">(Ta=25°C)</span>                    |         |                         |      |     |      |      |
| Item  | Symbol  | Absolute Maximum Rating | Unit |     |      |      |
| Forward Current   | IF      | 30                      | mA   |     |      |      |
| Peak Forward Current  | IFP     | 100                     | mA   |     |      |      |
| Reverse Voltage   | VR      | 5                       | V    |     |      |      |
| Power Dissipation   | PD      | 250                     | mW   |     |      |      |
| Electrostatic Discharge   | ESD     | 2000                    | V    |     |      |      |
| Operating Temperature   | TOPR    | -25°C~80°C              | °C   |     |      |      |
| Storage Temperature   | TSTG    | -40°C~100°C             | °C   |     |      |      |
| Lead Soldering Temperature  | TSOL    | 260°C FOR 3 SECONDS     |      |     |      |      |
| IFP Conditions: Pulse Width ≤ 10msec.and duty ≤ 1/10  |         |                         |      |     |      |      |
| SHENZHEN YUEJIASHENG ELECTRONIC CO. , LTD   |         |                         |      |     |      |      |
| (2) Initial Electrical/Optical Characteristics <span style="float: right;">(Ta=25°C)</span> |         |                         |      |     |      |      |
| Item  | Symbol  | Condition               | Min  | Typ | Max  | Unit |
| Forward Voltage   | VF      | IF=30(mA)               | 3    | /   | 3.4  | V    |
| Reverse Current   | IR      | VR=5(V)                 | /    | /   | 5    | μA   |
| Viewing Angle   | 2θ 1/2  | IF=30(mA)               | /    | 120 | /    | deg  |
| Luminous Intensity  | IV      | IF=30(mA)               | 5000 | /   | 6000 | mcd  |
| Luminous Flux   | ΦV      | IF=30(mA)               | /    | /   | /    | Lm   |
| Color temperature   | K       | IF=30(mA)               | 6500 | /   | 7000 | K    |
|   |         |                         | /    | /   | /    | K    |
| Recommend Forward Current   | IF(Rec) | IF=30(mA)               | /    | 30  | /    | mA   |
| 2.TYPICAL INITIAL OPTICAL/ELECTRICAL CHARACTERISTICS  |         |                         |      |     |      |      |
| 3.OUTLINE DIMENSIONS AND MATERIALS  |         |                         |      |     |      |      |
| Material as follows: Resin :Epoxy   |         |                         |      |     |      |      |
| Lead frame:Ag plating Iron ally   |         |                         |      |     |      |      |

■ Package Dimension:



| Part Number | Chip     |                | Lens Color  |
|-------------|----------|----------------|-------------|
|             | Material | Emitting Color |             |
| 0           | InGaN    | Warm White     | White Clear |

■ NOTES:

- 1.All dimension are millimeters
- 2.Tolerance is  $\pm 0.25$ mm unless otherwise noted.

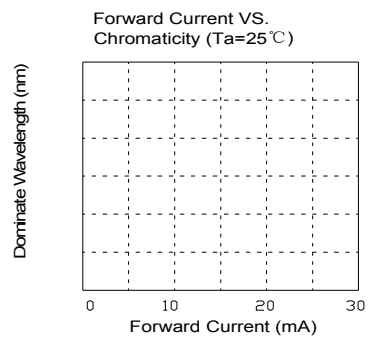
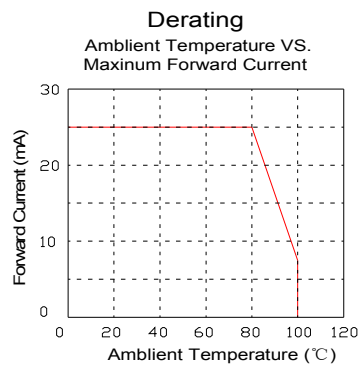
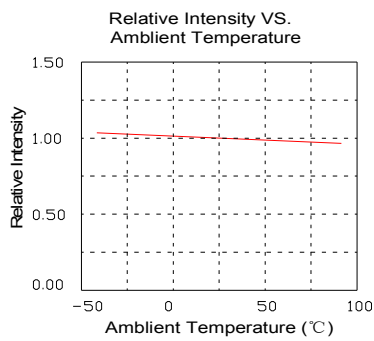
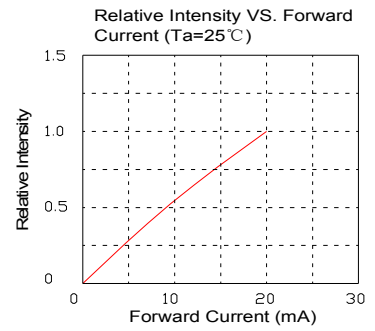
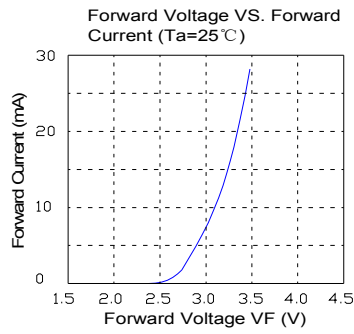
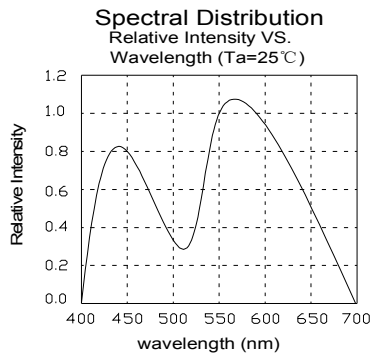
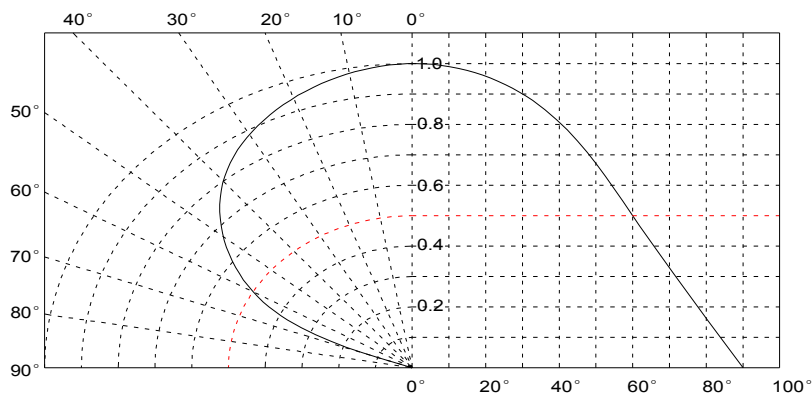


Diagram characteristics of radiation







: <http://>









'szyjsdz.cn.alibaba.com/

