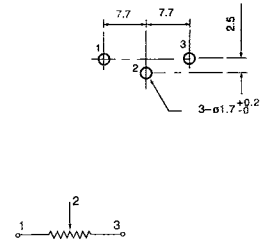
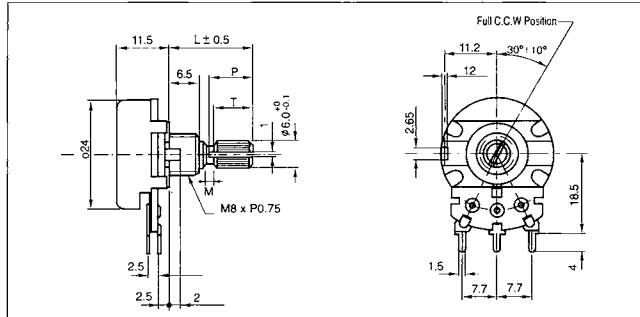
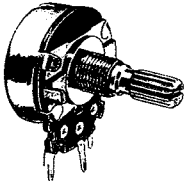


F-24K Series

Metal Shaft Rotary Potentiometer

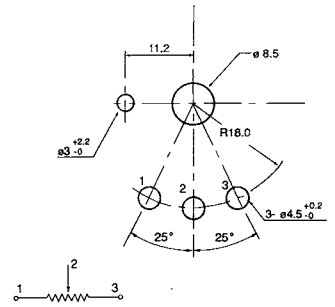
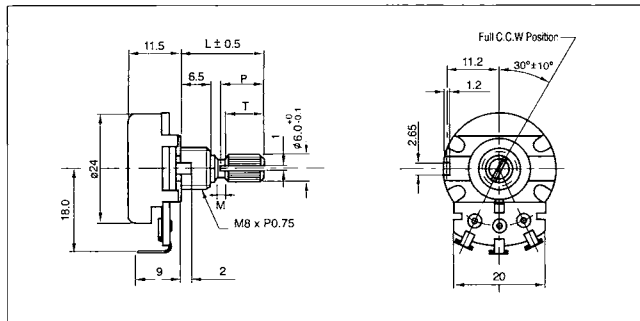
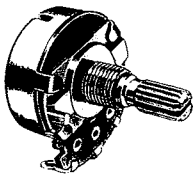
F-24KN

Vertical Type, Single Unit,
P.C.B. Terminal



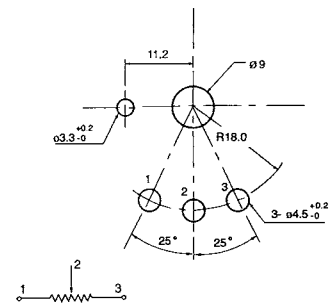
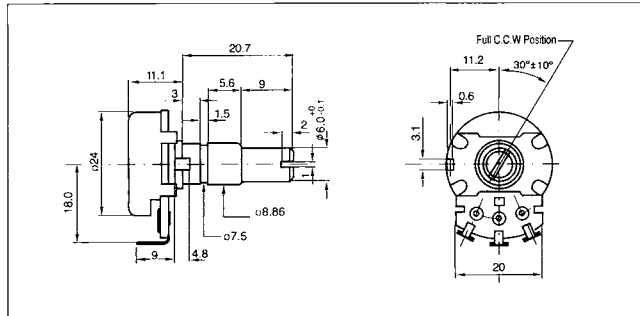
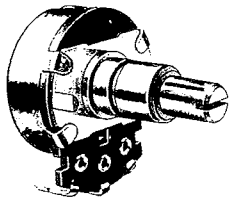
F-24KNP

Vertical Type, Single Unit,
Solder Terminal



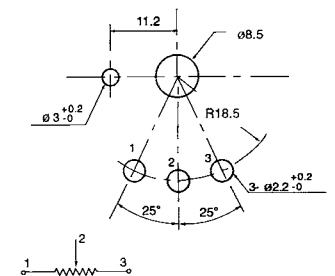
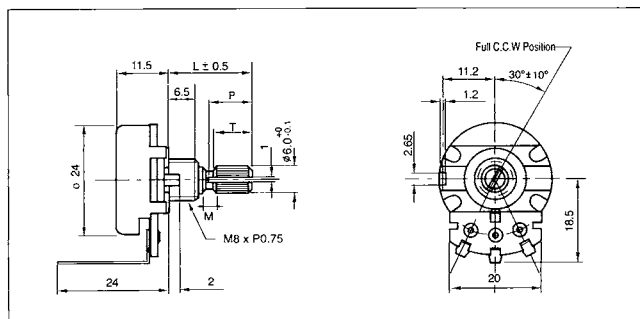
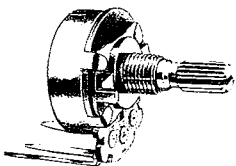
F-24KNP1

Vertical Type, Single Unit,
Solder Terminal



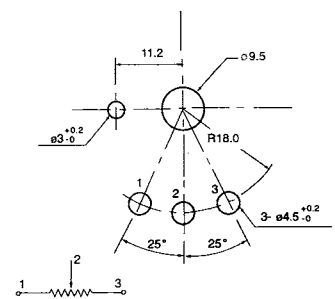
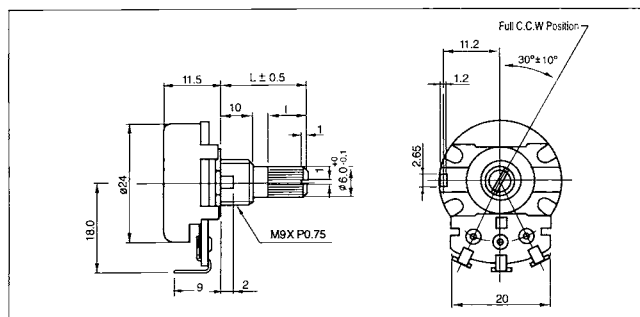
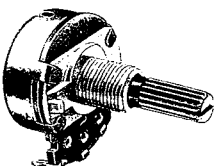
F-24KNP2

Horizontal Type, Single Unit,
P.C.B. Terminal



F-24KNPU

Vertical Type, Single Unit,
Solder Terminal With plastic Shaft



F-24K Series

Metal Shaft Rotary Potentiometer

SPECIFICATIONS

Electrical Characteristics

- Total Resistance.....500 Ω ~ 1M Ω
- Total Resistance Tolerance.....± 20%
- Resistance Taper.....A,B,C,D,See P14
- Max. Operation Voltage.....Linear Taper B : AC 500 V ,Other Tapers: AC 250V
- Rated Power.....Linear Taper B : 0.5W ,Other Tapers:0.25W
- Sliding Noise.....Less than 100 mV
- Insulation Resistance.....More than100 M Ω at DC 500 V
- Withstand Voltage.....1 minute at AC 500 V
- Residual Resistance..... Term. 1~2 : Less than 10 Ω
Term. 2~3 : Less than 10 Ω
- Switch Circuit.....S.P.S.T.
- Switch Contact Resistance.....Less than 50mΩ
- Switch Rated Power.....1.0 A at AC/DC 125 V

Mechanical Characteristics

- Total Rotational Angle.....300° ± 10°
- Rotational Torque.....30 gf.cm ~ 200 gf.cm
- Rotational Stopper Strength...5.0 Kgf.cm Min
- Push-Pull Strength.....10.0 Kgf Min
- Switch Rotational Angle.....50°±10°
- Switch Action.....150 gf.cm ~ 800 gf.cm

Durability

- Rotational Life.....10,000 Cycles
- Rotational Life (for Joystick)..... 100,000 Cycles Min.

SHAFT ILLUSTRATION

Standard Dimensions of Shaft for F-24K Series.
(Customer designs are welcomed)

KQ-Type

F-Type

RE-Type

R-Type

Y-Type

Aluminum Shaft Dimensions and Styles

KQ	L	15	20	25	30	35
	P	7	12	14	14	14
	T	6	10	12	12	12
	M	1	2	2	4	4
F	L	15	20	25	30	35
	F	7	12	12	12	12
RE	L	15	20	25	30	35
R	L	15	20	25	30	35

Plastic Shaft Dimensions and Styles

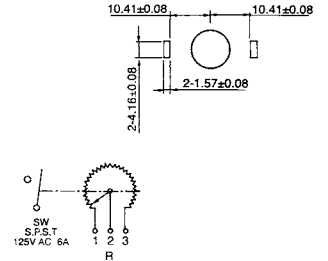
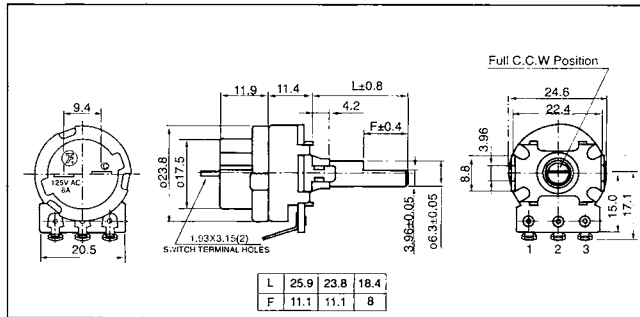
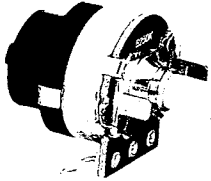
Y	L	15	20	25	30	35
	I	12	12	12	12	12
F	L	15	20	25	30	35
	F	12	12	12	12	12
R	L	15	20	25	30	35

F-24K Series

Insulated Shaft Rotary Potentiometer

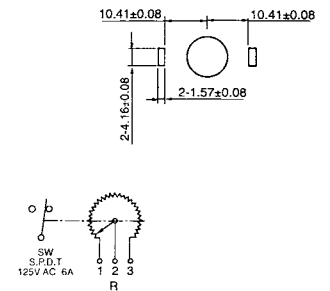
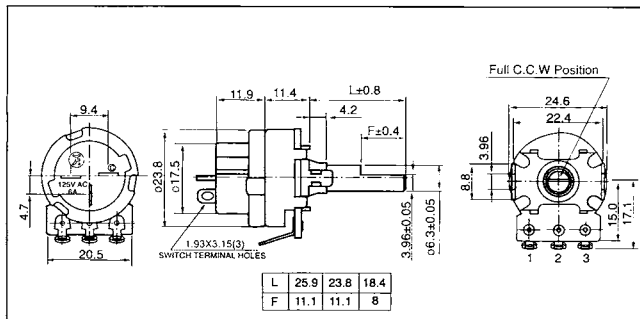
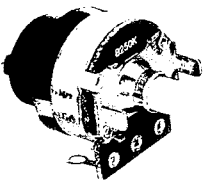
F-24KSP-4

Vertical Type with Switch,
Single Unit, Solder Terminal



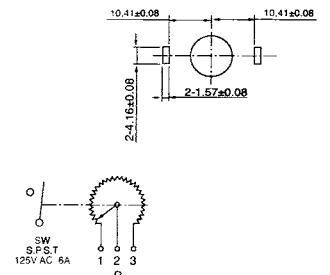
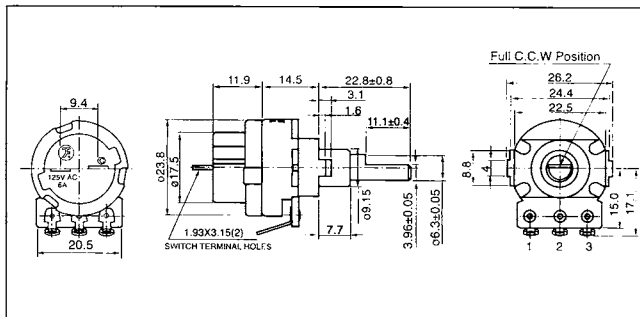
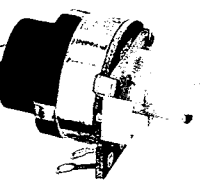
F-24KSP-5

Vertical Type with Switch,
Single Unit, Solder Terminal



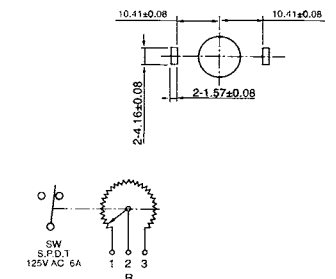
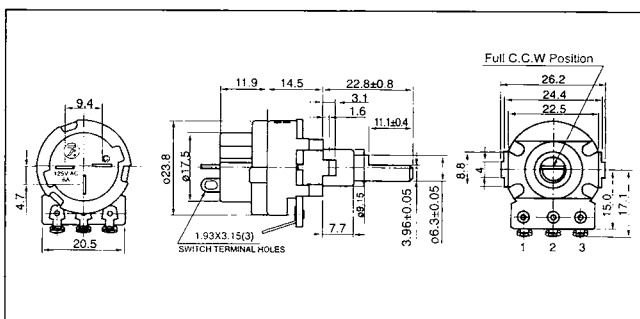
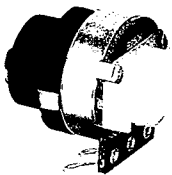
F-24KSP-7

Vertical Type with Switch,
Single Unit, Solder Terminal



F-24KSP-9

Vertical Type with Switch,
Single Unit, Solder Terminal

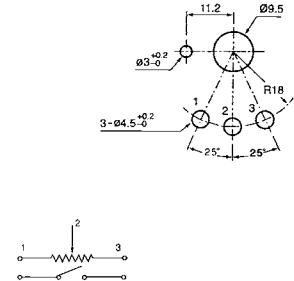
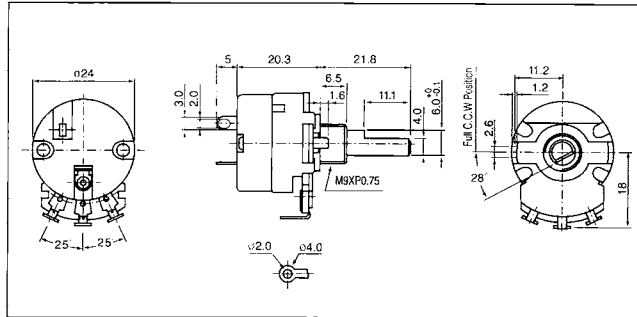
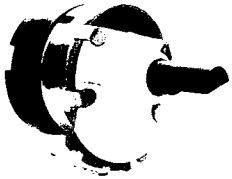


F-24K Series

Insulated Shaft Rotary Potentiometer

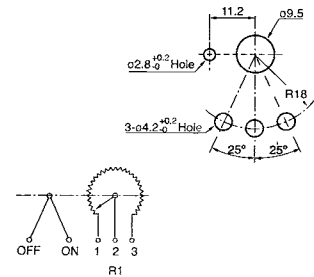
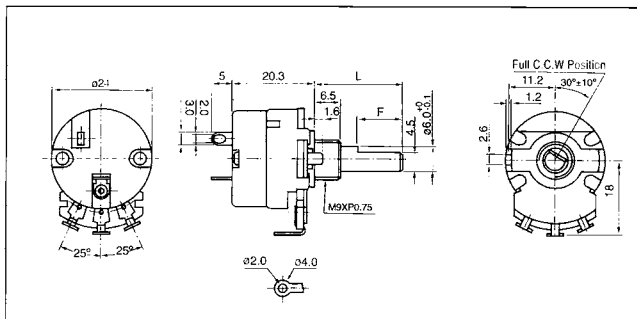
F-24KSPU4-6A

Vertical Type With Switch,
Single Unit, Solder Terminal



F-24KSPU4-10A

Vertical Type With Switch,
Single Unit, Solder Terminal



SPECIFICATIONS

Electrical Characteristics

- Total Resistance.....10K Ω ~ 1M Ω
- Total Resistance Tolerance..... \pm 20%
- Resistance Taper.....A, B, C, D, See P14
- Max. Operation Voltage.....Linear Taper B : AC 500 V , Other Tapers : AC 250V
- Rated Power.....Linear Taper B : 0.5W , Other Tapers:0.25W
- Sliding Noise.....Less than 100 mV
- Insulation Resistance.....More than 100 M Ω at DC 500 V
- Withstand Voltage.....1 minute at AC 1080 V
- Residual Resistance.....Term. 1~2 : Less than 10 Ω
Term. 2~3 : Less than 10 \pm 20% K Ω
(Total Resistance:175K Ω)
- Switch Contact Resistance.....Less than 50m Ω
- Switch Rated Power.....6.0(10) A at AC/DC 125 V

Mechanical Characteristics

- Total Rotational Angle.....253 $^{\circ}$ \pm 5 $^{\circ}$
- Rotational Torque.....20 gf.cm ~ 200 gf.cm
- Rotational Stopper Strength.....5.0 Kgf.cm Min.
- Push-Pull Strength.....10.0 Kgf Min.
- Switch Rotational Angle.....50 $^{\circ}$ \pm 10 $^{\circ}$
- Switch Action.....150 gf.cm ~ 800 gf.cm
- Bushing & Nut Tight Strength....7.0Kgf.cm Min

Durability

- Rotational Life.....10,000 Cycles

F-24K Series

Insulated Shaft Rotary Potentiometer

SPECIFICATIONS

Electrical Characteristics	<ul style="list-style-type: none">• Total Resistance.....10KΩ ~ 1MΩ• Total Resistance Tolerance.....\pm 20%• Resistance Taper.....A,B,C,D,See P14• Max. Operation Voltage.....Linear Taper B : AC 500 V ,Other Tapers : AC 250V• Rated Power.....Linear Taper B : 0.5W ,Other Tapers:0.25W• Sliding Noise.....Less than 100 mV• Insulation Resistance.....More than100 M Ω at DC 500 V• Withstand Voltage.....1 minute at AC1500 V(Shaft set to Terminals)• Withstand Voltage.....1 minute at AC 1080 V(Switch Terminals)• Residual Resistance.....Term. 1~2 : Less than 50 Ω Term. 2~3 : Less than 50 Ω• Switch Contact Resistance.....Less than 50m Ω• Switch Rated Power.....6.0 A at AC 125 V
Mechanical Characteristics	<ul style="list-style-type: none">• Total Rotational Angle.....320$^{\circ}$ \pm 10$^{\circ}$• Rotational Torque.....20 gf.cm ~ 200 gf.cm• Rotational Stopper Strength.....5.0 Kgf.cm Min.• Push-Pull Strength.....10.0 Kgf Min.• Switch Rotational Angle.....30$^{\circ}$$\pm10^{\circ}$• Switch Action.....100 gf.cm ~ 500 gf.cm
Durability	<ul style="list-style-type: none">• Rotational Life.....10,000 Cycles