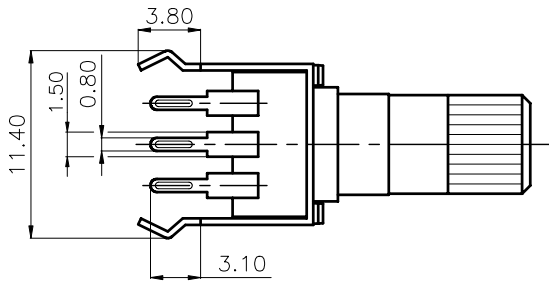
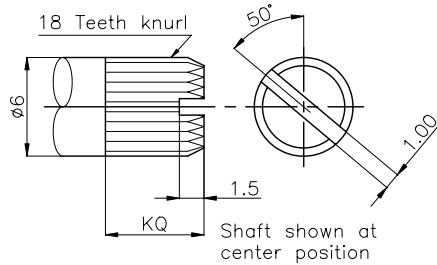
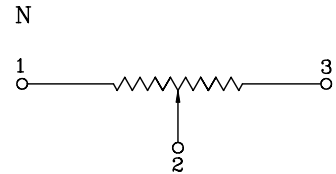


Mounting hole detail  
Viewed from mounting side

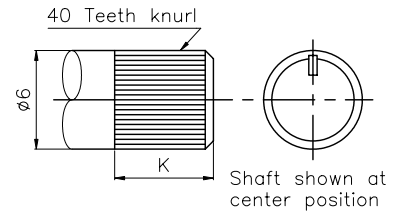


**Circuit explanation:**



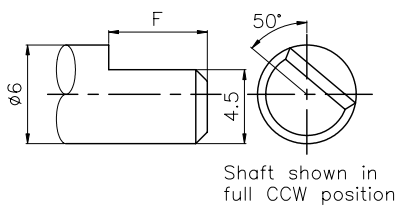
**KQ TYPE:**

X	Y	Z
L	15	20
KQ	7	7



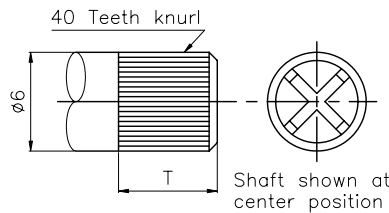
**K TYPE:**

X	Q	R	S	T	U
L	15	20	25	30	35
K	6	7	7	7	7



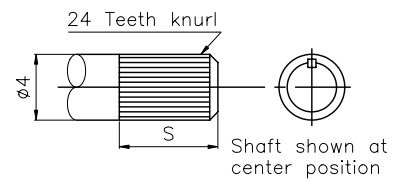
**F TYPE:**

X	A	B	C	D
L	15	20	25	30
F	6	7	12	12



**T TYPE:**

X	H	I	J
L	9.5	15	20
T	/	6	7



**S TYPE:**

X	K	L	M	N	O
L	15	20	25	30	35
S	7	7	7	7	7

## MODEL: R09 N-

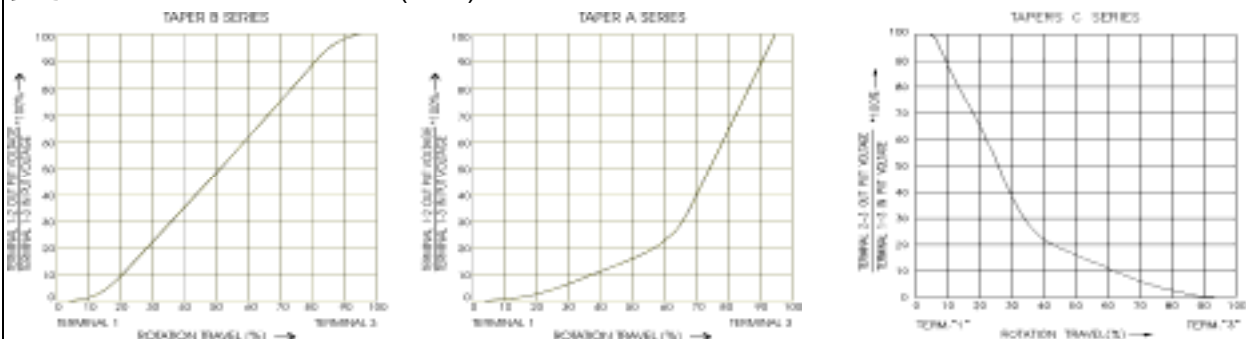
Mechanical characteristics:機械的性能:

Item<項目>	Performance<性能>
Total rotational angle/travel 全迴轉角度/行程	280°±5°
Rotation torque 迴轉扭力	10~80 gf-cm
Shaft rotational stopper strength 軸的止迴轉強度	3 kgf-cm
Push-pull strength 軸推拉強度	5 kgf
Click position C.C.位置	Center click

Electrical characteristics:電氣的性能:

Item<項目>	Performance<性能>
Resistance taper 阻值線性	A/B/C

**Reference:** Standard resistance tapers in reference to rotational angles(travel) are as shown below:  
**參考:**標準阻值曲線及旋轉角度(行程)表示如下:



Total resistance 總阻值	5KΩ~500KΩ
Total resistance tolerance 總阻值容許差	±20% (more than 1MΩ±30%)
Max. operating voltage 最高使用電壓	50V AC/20V DC
Rated power 定格電力	0.05W
Residual resistance 殘留阻值	R 250KΩ 0.1% max. of total resistance 250KΩ>R>10KΩ 20Ω max. 10KΩ R 10Ω max.
Rotational/sliding noise 迴轉/滑動雜音	Less than 100mV
Insulation resistance 絕緣抵抗	More than 100MΩ at DC 250V
Manual Soldering heat 手焊錫溫度	Below 300°C, Less than 3 seconds.

Durability:耐久的性能:

Item<項目>	Performance<性能>
Rotational/sliding life 迴轉/滑動壽命	10,000 cycles