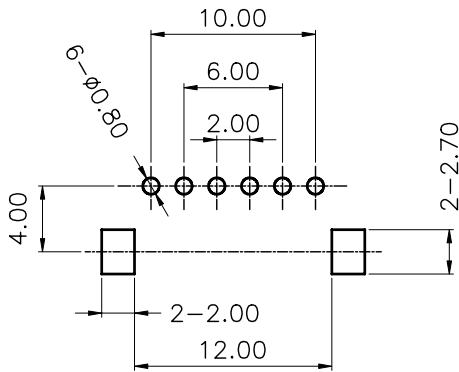
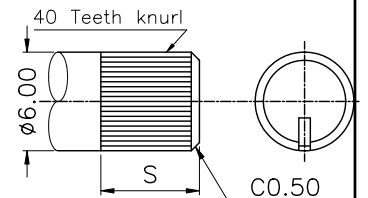
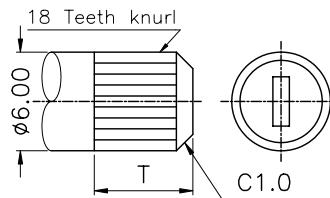
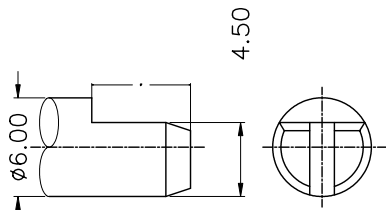
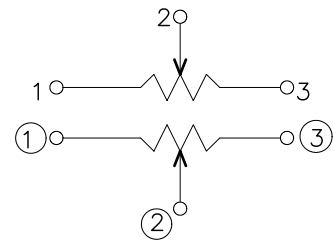


shaft shown in full C.C.W. position



R1=1.2.3

R2= ① ② ③



*L=5F type C=0.5

*other L=5F type C=0.5*1.5

F TYPE:

X	L	K	I	J	A	H	B	C
L	5	7	10	10	15	15	20	25
F	5	7	7	8	7	12	12	12

T TYPE:

X	V	W	Y	Z
L	5	10	15	20
T	4.5	10	15	15

S TYPE:

X	N	O	R
L	10	15	20
S	7	10	12

MODEL: R1216G-

Mechanical characteristics:機械的性能:

Item<項目>	Performance<性能>
Total rotational angle/travel 全迴轉角度/行程	300°±10°
Rotation torque 迴轉扭力	20~150 gf-cm
Shaft rotational stopper strength 軸的止迴轉強度	4 kgf-cm
Push-pull strength 軸推拉強度	4 kgf
Click position C.C.位置	Center click

Electrical characteristics:電氣的性能:

Item<項目>	Performance<性能>
Resistance taper 阻值線性	A/B/C
Reference: Standard resistance tapers in reference to rotational angles(travel) are as shown below: 參考: 標準阻值曲線及旋轉角度(行程)表示如下:	
Total resistance 總阻值	5KΩ~2MΩ
Total resistance tolerance 總阻值容許差	±20% (more than 1MΩ±30%)
Max. operating voltage 最高使用電壓	B curve:100V Other than curve B:50V
Rated power 定格電力	B curve:0.04W Other than B curve:0.02W
Residual resistance 殘留阻值	R 250KΩ 0.1% max. of total resistance 250KΩ>R>10KΩ 20Ω max. 10KΩ R 10Ω max.
Rotational/sliding noise 迴轉/滑動雜音	Less than 100mV
Insulation resistance 絕緣抵抗	More than 50MΩ at DC 250V
Manual Soldering heat 手焊錫溫度	Below 300°C, Less than 3 seconds.
Gang error 相互偏差(同步)	-40 to 0dB dB 3dB

Durability:耐久的性能:

Item<項目>	Performance<性能>
Rotational/sliding life 迴轉/滑動壽命	15,000 cycles