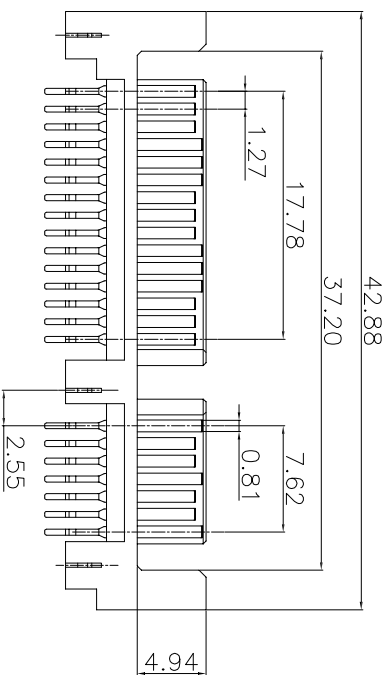
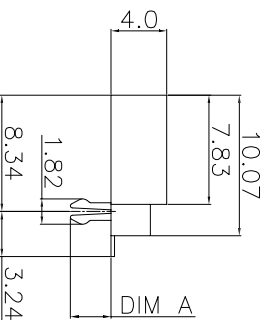
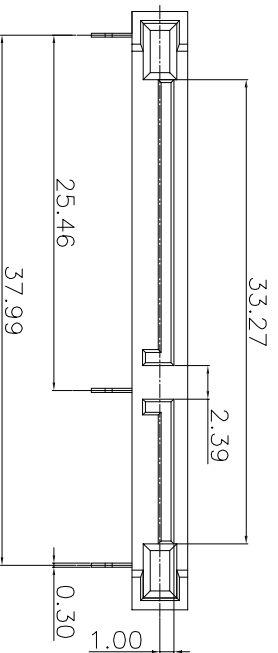
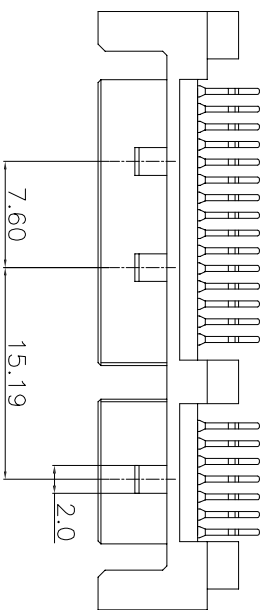
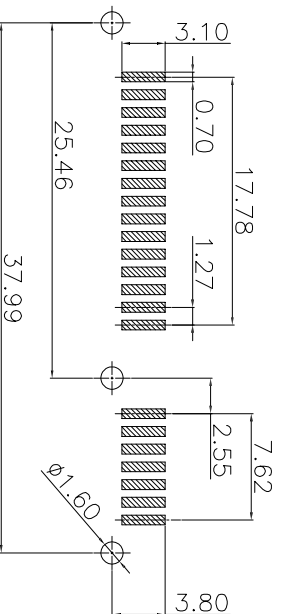


ROHS



- NOTE:
- MATERIAL:
HOUSING: LCP WITH 30% GF, UL 94V-0, BLACK COLOR.
CONTACTS: BRASS T=0.25mm.
BOARDLOCKS: BRASS.
 - FINISH:
CONTACTS: GOLD FLASH PLATED ON CONTACT AREA, [100μ"] MIN., BRIGHT-TIN ON SOLDER TAIL, WITH ENTIRE CONTACT UNDERPLATED [50μ"] MIN., NICKEL.
BOARDLOCKS: [100μ"] MIN. BRIGHT-TIN OVER[50μ"] MIN. NICKEL ON ENTIRE BOARDLOCK.



PCB LAYOUT
RECOMMENDED PCB TOLERANCE:±0.05

>10	±0.30	SCALE:	1:1	APPRD.	TITLE:
3~10	±0.20	比例:		批准:	型号:
0~3	±0.10	UNIT:	mm	CHKD.	SMTA 7+15P 公座 90度 三个鱼叉 SMT型
		单位:		审核:	
		ANGLE	±1°	DR.	Part No:
				设计:	客户料号:
				金承鑫	2021.04.16