



- ◆ Designed to meet IR 235 degree C Peak Requirement.
- ◆ Designed to meet IEEE 802.3 Requirement.

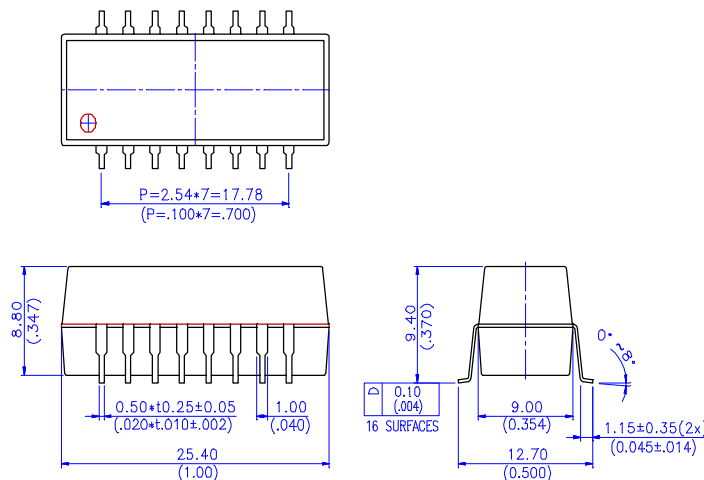
Specifications

Part Number	Turn ratio (X' mit/Rec.)	Insertion Loss dB max.(1-10MHz)	Attenuation		Schematic
			30MHz (TX/RX)	50MHz (TX/RX)	
FA163076	2 :1/1 : 1	-1.0	-10/-16	-10/-16	S-1
FA163079	1 : 1/1 : 1	-1.0	-30/-20	-35/-35	S-2
20LF42S	1 :1.41/1 : 1	-1.0	-30/-20	-35/-35	S-5
20LF43S	1 : 1/1 :1	-1.0	-30/-20	-35/-35	S-3
20LF021CS	1 : 1/1 : 1	-4.5	-30/-20	-35/-35	S-4

Parameter	condition	Min.	Typ.	Max.	Unit
Return loss(TX/RX)	@5-10MHz	-15.0			dB
Isolation Voltage	1 minute	1500			Vrms
Cross talk	@1-10MHz	-35.0			dB
CMRR	@1-100MHz	-30.0			dB

Note : FA163079 designed for MircoLinear Chip set for 10Base Fiber solution :

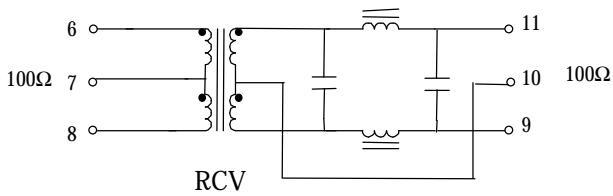
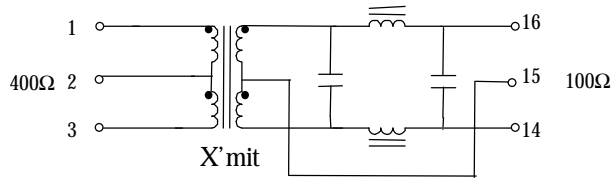
Dimension :



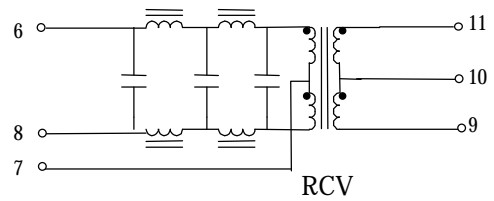
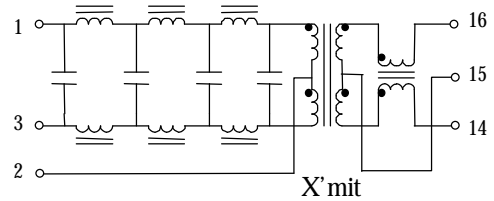
Date : Jan.03,2000

Schematic :

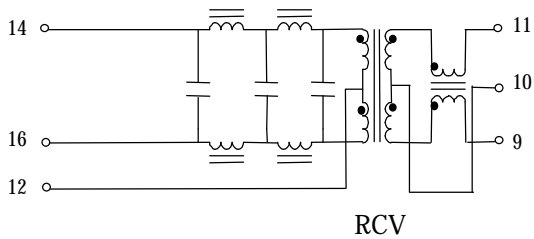
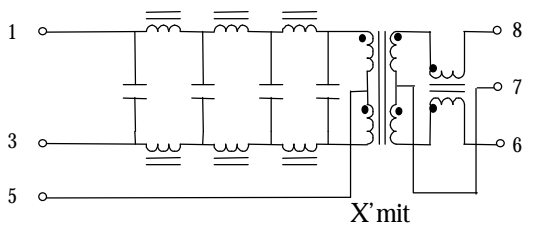
S-1



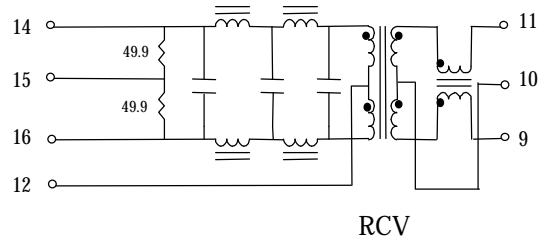
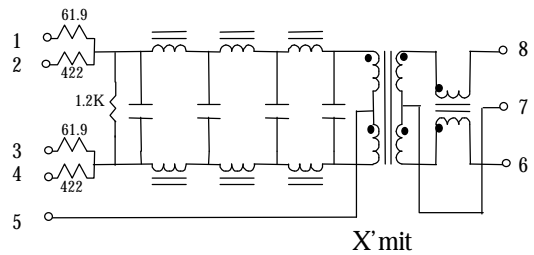
S-2



S-3



S-4



S-5

