



**TO-92 Encapsulate Three-terminal voltage regulator**

**CJ79L09** Three-terminal negative voltage regulator

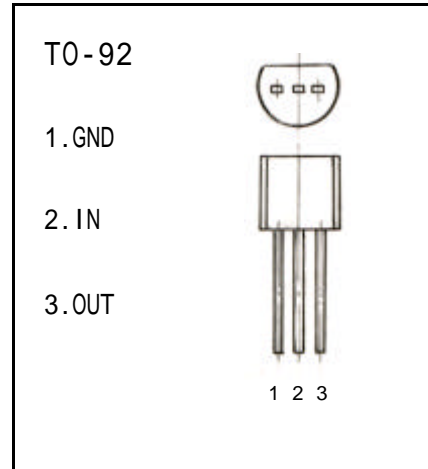
**FEATURES**

Maximum Output current

$I_{OM}$ : 0.1 A

Output voltage

$V_o$ : -9 V



**ABSOLUTE MAXIMUM RATINGS ( Operating temperature range applies unless otherwise specified )**

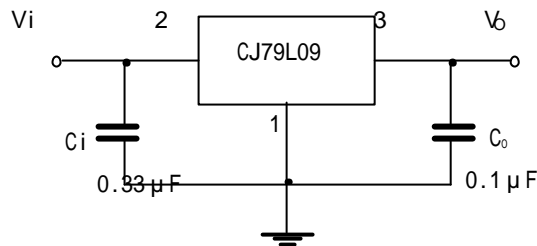
Parameter	Symbol	Value	Unlts
Input Voltage	$V_i$	-30	V
Operating Junction Temperature Range	$T_{OPR}$	0—+125	
Storage Temperature Range	$T_{STG}$	-55—+150	

**ELECTRICAL CHARACTERISTICS**

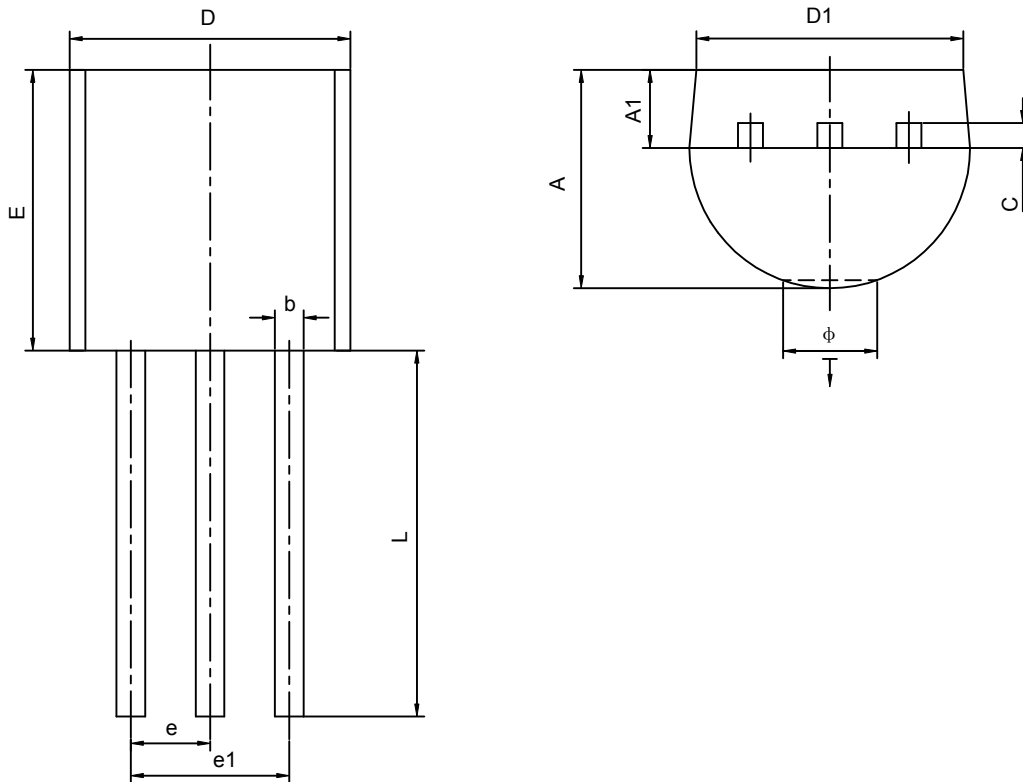
( $V_i = -15V, I_o = 40mA, 0 < T_j < 125$ ,  $C_1 = 0.33 \mu F, C_o = 0.1 \mu F$ , unless otherwise specified )

Parameter	Symbol	Test conditions	MIN	TYP	MAX	UNIT
Output voltage	$V_o$	$V_{IN} = -15V, I_o = 40mA$	-8.64	-9.0	-9.36	V
Line Regulation	$V_o - V_{IN}$	$V_{IN} = -12.5 \sim -24V, I_o = 40mA$		27	200	mV
Load Regulation	$V_o - I_o$	$V_{IN} = -15V, I_o = 1 \sim 100mA$		12	90	mV
Quiescent Current	$I_Q$	$V_{IN} = -15V, I_o = 40mA$		3.5	6.0	mA
Ripple Rejection	RR	$V_{IN} = -12V \sim -22V, I_o = 40mA, e_{iN} = 1V_{P-P}, f = 150Hz$	37	64		dB
Output Noise Voltage	$V_{NO}$	$V_{IN} = -15V, BW = 10Hz \sim 100KH, I_o = 40mA$		210		$\mu V$

**TYPICAL APPLICATION**



## TO-92 PACKAGE OUTLINE DIMENSIONS



Symbol	Dimensions In Millimeters		Dimensions In Inches	
	Min	Max	Min	Max
<b>A</b>	3.300	3.700	0.130	0.146
<b>A1</b>	1.100	1.400	0.043	0.055
<b>b</b>	0.380	0.550	0.015	0.022
<b>c</b>	0.360	0.510	0.014	0.020
<b>D</b>	4.400	4.700	0.173	0.185
<b>D1</b>	3.430		0.135	
<b>E</b>	4.300	4.700	0.169	0.185
<b>e</b>	1.270TYP		0.050TYP	
<b>e1</b>	2.440	2.640	0.096	0.104
<b>L</b>	14.100	14.500	0.555	0.571
<b>Ö</b>		1.600		0.063
$\downarrow$	0.000	0.380	0.000	0.015