



JIANGSU CHANGJIANG ELECTRONICS TECHNOLOGY CO., LTD

## TO-92 Plastic-Encapsulate Transistors

### PCR 100- 6 , - 8 Silicon Planar PNP Thyristor

#### FEATURES

Current- $I_{GT}$  : 200  $\mu$  A

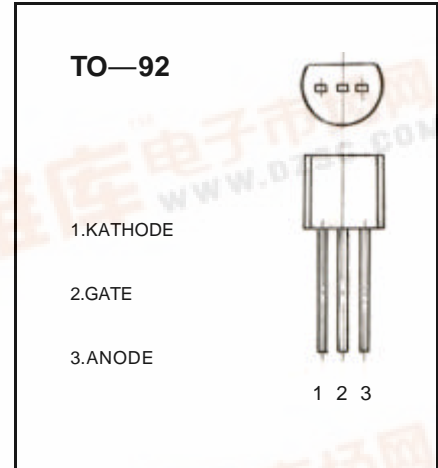
$I_{TRMS}$  : 0.8 A

$V_{DRM}$  : PCR100-6 : 400 V

PCR100-8 : 600 V

Operating and storage junction temperature range

$T_J, T_{stg}$  : -55 to +150



#### ELECTRICAL CHARACTERISTICS ( $T_{amb}=25$ unless otherwise specified )

Parameter	Symbol	Test conditions	MIN	MAX	UNIT	
On state voltage *	$V_{TM}$	$I_{TM}=1A$		1.7	V	
Gate trigger voltage	$V_{GT}$	$V_{AK}=7V$		0.8	V	
Peak Repetitive forward and reverse blocking voltage PCR100-6 PCR100-8	$V_{DRM}$ AND $V_{RRM}$	$I_{DRM}=10 \mu A, V_{MAX}=1010 V$	400 600		V	
Peak forward or reverse blocking Current	$I_{DRM}$ $I_{RRM}$	$V_{AK}= \text{Rated}$ $V_{DRM}$ OR $V_{RRM}$		10	$\mu A$	
Holding current	$I_H$	$I_{HL}= 20 \text{ mA}, A_v = 7 V$		5	mA	
Gate trigger current	$I_{GT}$	$V_{AK}=7V$	A2	5	15	$\mu A$
			A1	15	30	$\mu A$
			A	30	80	$\mu A$
			B	80	200	$\mu A$

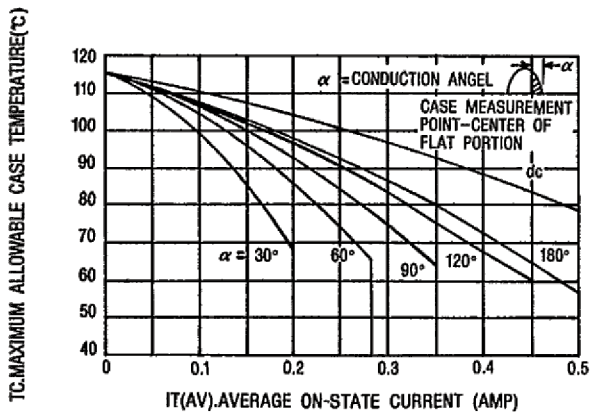
\* Forward current applied for 1 ms maximum duration , duty cycle 1%.



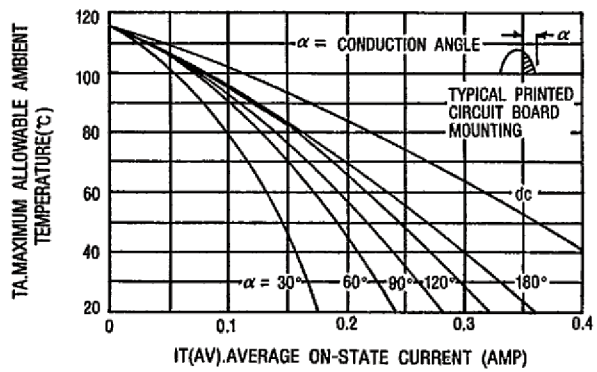
# Typical Characteristics

# PCR100-6,-8

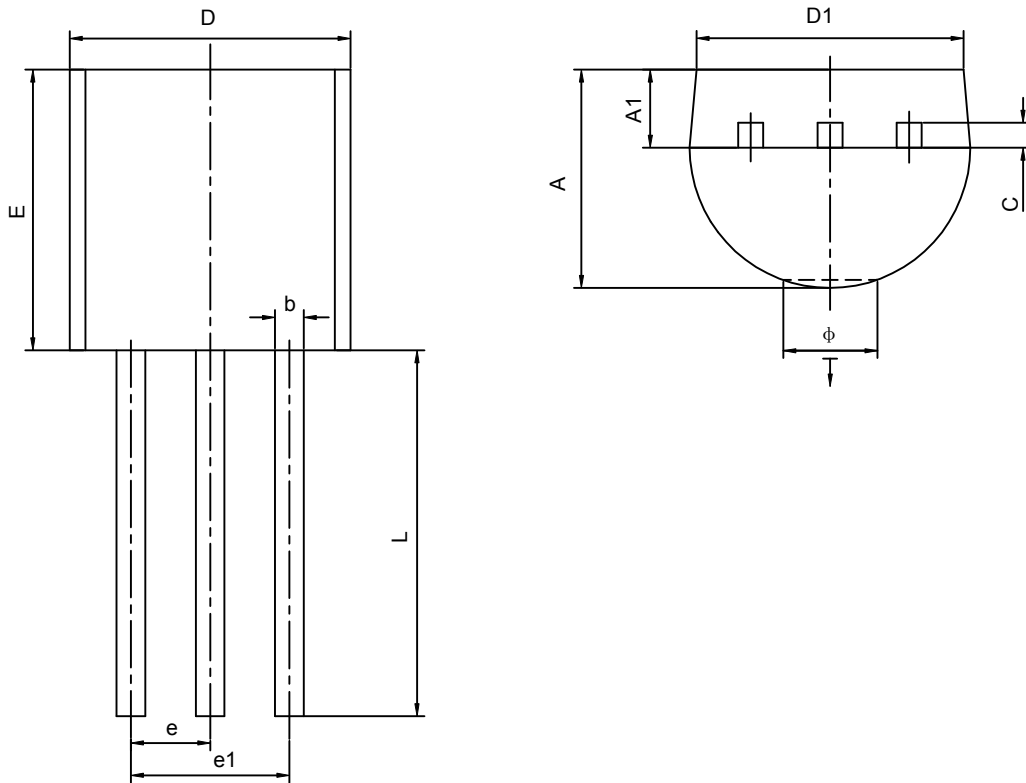
**FIGURE 1-PCR100-7, PCR100-8 CURRENT DERATING  
(REFERENCE: CASE TEMPERATURE)**



**FIGURE 2-PCR100-7, PCR100-8 CURRENT DERATING  
(REFERENCE: AMBIENT TEMPERATURE)**



## TO-92 PACKAGE OUTLINE DIMENSIONS



Symbol	Dimensions In Millimeters		Dimensions In Inches	
	Min	Max	Min	Max
A	3.300	3.700	0.130	0.146
A1	1.100	1.400	0.043	0.055
b	0.380	0.550	0.015	0.022
c	0.360	0.510	0.014	0.020
D	4.400	4.700	0.173	0.185
D1	3.430		0.135	
E	4.300	4.700	0.169	0.185
e	1.270TYP		0.050TYP	
e1	2.440	2.640	0.096	0.104
L	14.100	14.500	0.555	0.571
Ö		1.600		0.063
↓	0.000	0.380	0.000	0.015